



InstantView

SMI Windows MSI File User Manual

Revision History

| Revision | Release Date | Description |
|----------|--------------|--------------|
| V1.0.0.0 | 10/12/2025 | First Draft. |
| | | |
| | | |
| | | |
| | | |
| | | |
| | | |
| | | |
| | | |
| | | |

IMPORTANT NOTICE

INFORMATION IN THIS DOCUMENT IS PROVIDED IN CONNECTION WITH PRODUCTS OF SILICON MOTION, INC. ("SMI"). NO LICENSE, EXPRESS OR IMPLIED, BY ESTOPPEL OR OTHERWISE, TO ANY INTELLECTUAL PROPERTY RIGHTS IS GRANTED BY THIS DOCUMENT. EXCEPT AS PROVIDED IN SMI'S TERMS AND CONDITIONS OF SALE FOR SUCH PRODUCTS, SMI ASSUMES NO LIABILITY WHATSOEVER, AND SMI DISCLAIMS ANY EXPRESS OR IMPLIED WARRANTY, RELATING TO SALE AND/OR USE OF SMI PRODUCTS INCLUDING LIABILITY OR WARRANTIES FOR FITNESS FOR A PARTICULAR PURPOSE, MERCHANTABILITY, OR INFRINGEMENT OF ANY PATENT, COPYRIGHT OR OTHER INTELLECTUAL PROPERTY RIGHT.

SMI products are not intended for use in medical, life saving, life sustaining, critical control or safety systems, or in nuclear facility applications. SMI may make changes to specifications and product descriptions at any time, without notice. SMI may have patents or pending patent applications, trademarks, copyrights, or other intellectual property rights that relate to the presented subject matter. The furnishing of documents and other materials and information does not constitute any license, express or be implied, by estoppel or otherwise, to any such patents, trademarks, copyrights, or other intellectual property rights. The information in this document is furnished for informational use only, is subject to change without notice, and should not be construed as a commitment by SMI. SMI assumes no responsibility or liability for any errors or inaccuracies that may appear in this document or any software that may be provided in association with this document. Except as permitted by such license, no part of this document may be reproduced, stored in a retrieval system, or transmitted in any form or by any means without the express written consent of SMI. Contact your local SMI sales office or your distributor to obtain the latest specifications and before placing your product order.

Silicon Motion and Silicon Motion logo are registered trademarks of SMI and/or its affiliates. Other brand names mentioned herein are for identification purposes only and may be trademarks and/or registered trademarks of their respective owners.

Copyright © 2025, SMI. All Rights Reserved.

Table of Contents

- 1. Overview 4
- 2. Deploy Software by using Group Policy..... 4
 - 2.1 Create a Network Share for the MSI Installation File 4
 - 2.2 Create GPO to Deploy Software on Computers 7
 - 2.3 GPO Settings to Install Software for Users Only..... 13

1. Overview

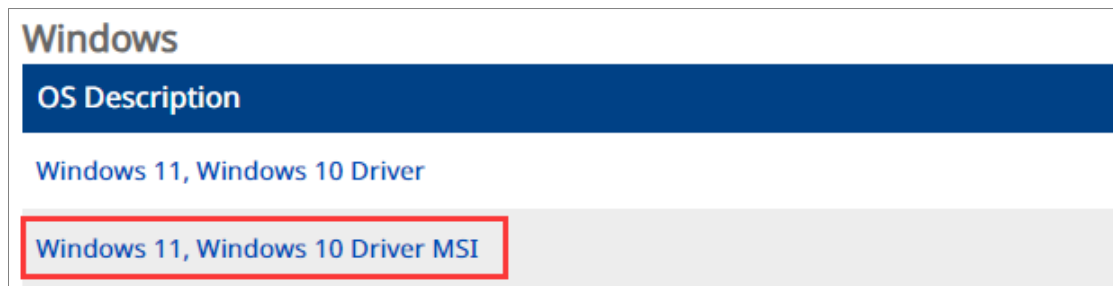
In this tutorial, SMI will show you how to use Group Policy to deploy software on computers and users. In this example, we will deploy “Windows 11, Windows 10 Driver MSI” on computers and user via Group Policy.

2. Deploy Software by using Group Policy

This chapter introduces the functions of Windows 11, Windows 10 Driver MSI file and the suggested steps to use the driver.

Here it shows a way to get the Windows 11, Windows 10 Driver MSI file.

- Download “Windows 11, Windows 10 Driver MSI” :
<https://www.siliconmotion.com/downloads/SM770-drivers.html>
<https://www.siliconmotion.com/download/DWs4/a/SM770-drivers.html>



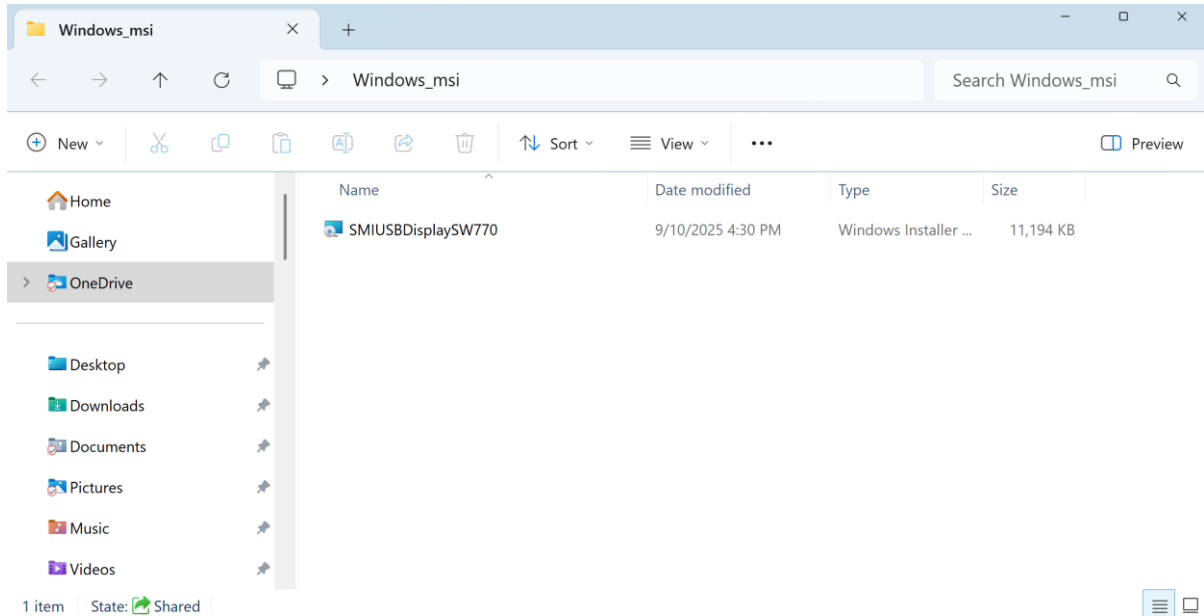
2.1 Create a Network Share for the MSI Installation File

The first step is to ensure you have a secure shared folder for the MSI file, so users from other computers can access it. You aren't able to replicate the MSI file to computers; they will run in the form of a network share.

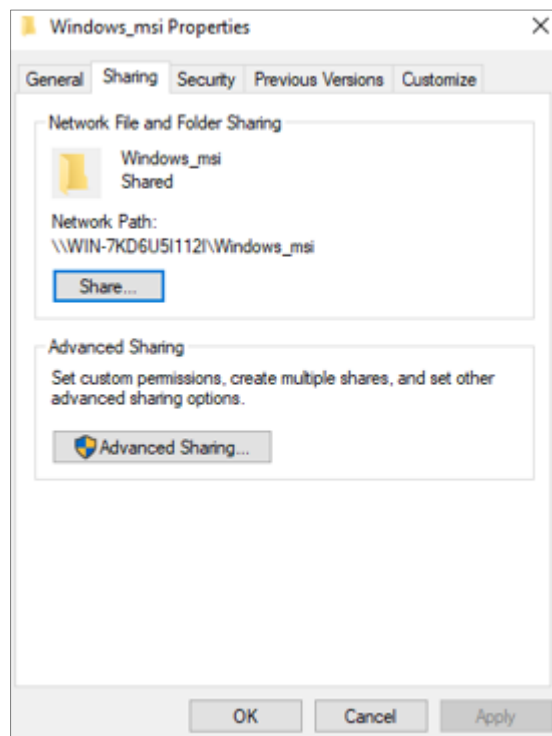
Steps to create a secure network share:

Select a server that everyone can access to configure the shared folder.

We are using a 2019 Windows server. Please create a folder called “Windows_msi” to store the installed files. You can name your folders whatever you want.

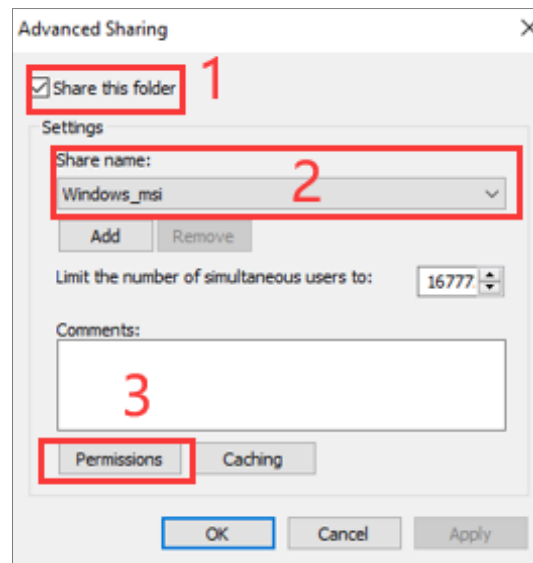


Right-click the folder named “Windows_msi”, and then click the “Sharing” tab and “Advanced Sharing”.

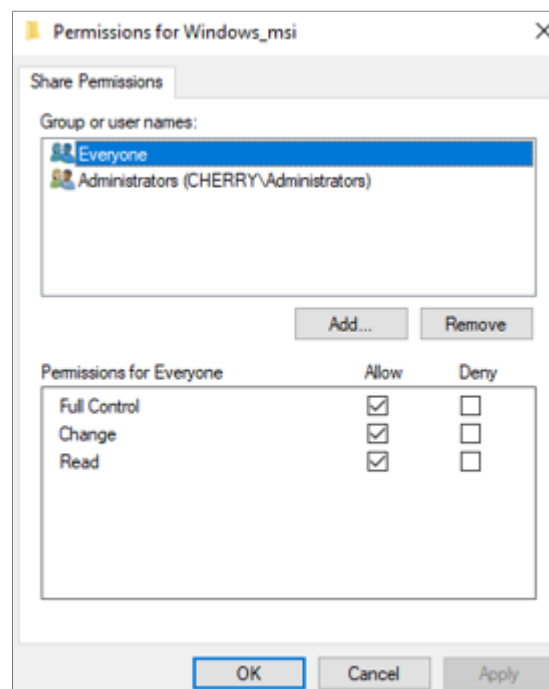


On the screen of Advanced Sharing, click “Share this folder”. The share name can be whatever you want, but here we called it “Windows_msi”.

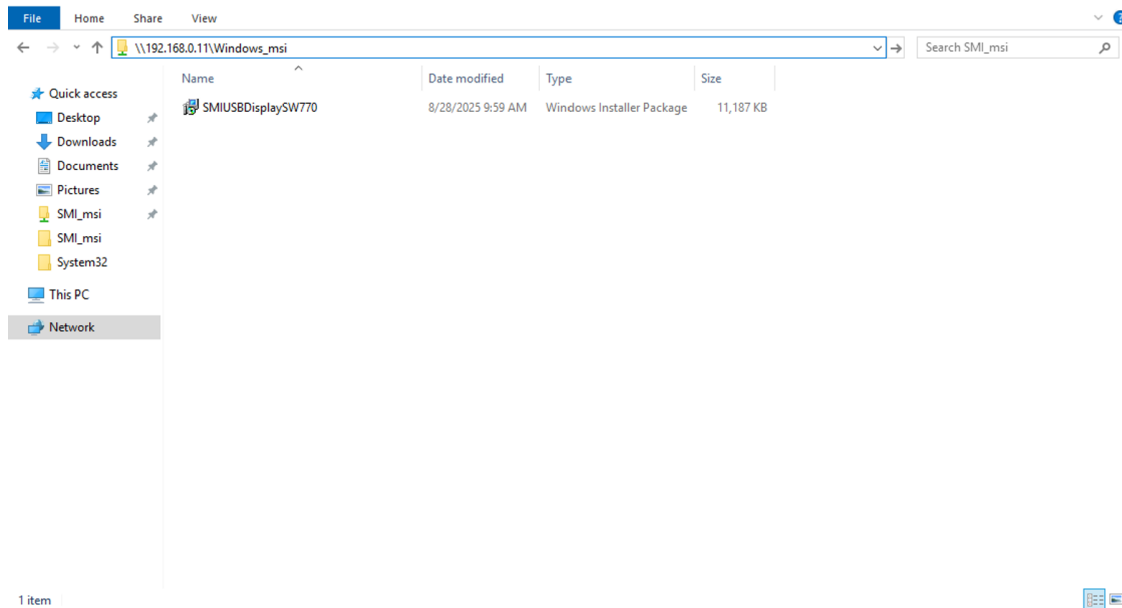
Now click the “Permissions” button .



Now add computers and users.



Test the access to the network share on a remote computer. On the remote computer in the search box, type the \\hostname\sharename. In this document, server name is “192.168.0.11” and the share name is “Windows_msi”.



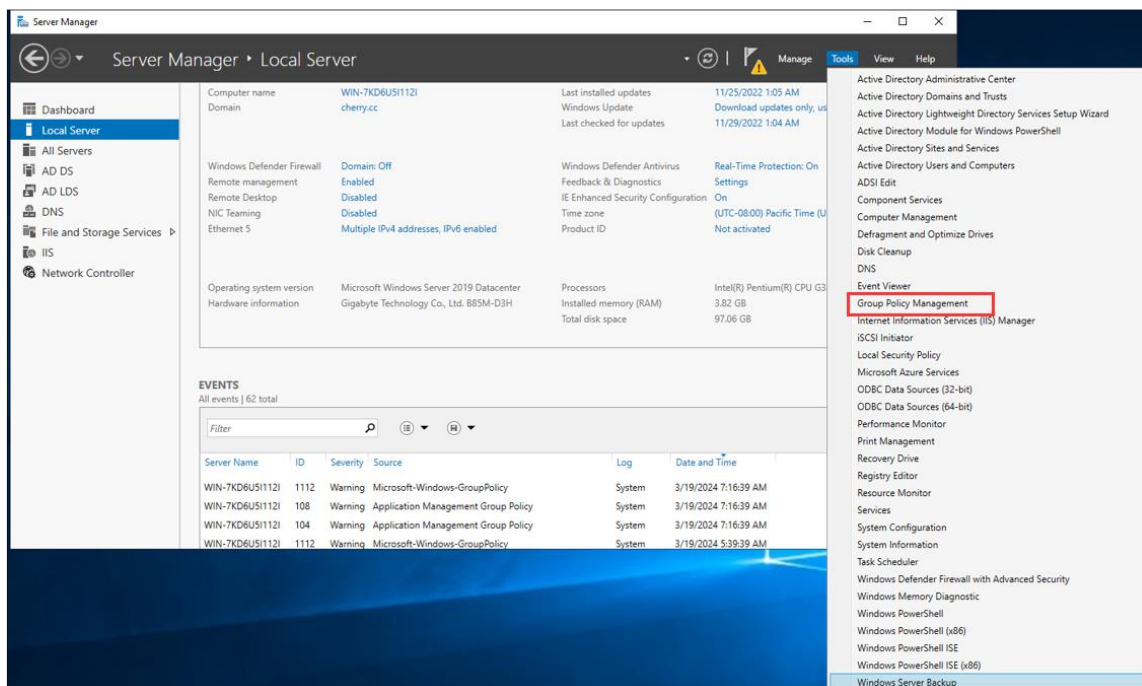
If you can access the share, you will see a list of files.

That completes the network share configuration. In the next section, we will configure the GPO for the software deployment on computers and users.

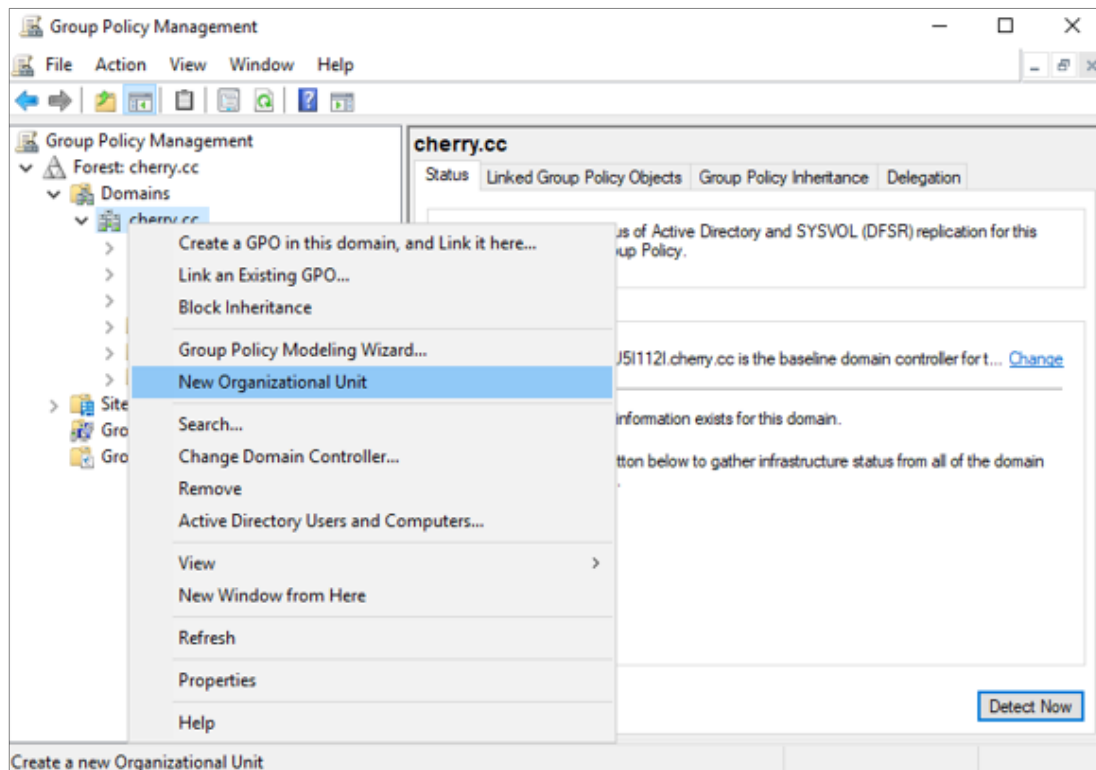
2.2 Create GPO to Deploy Software on Computers

Group policy includes the settings for target computers and for target users. In this section, we will target the computer to deploy the software. That means the software installation can be done for anyone that logs into the computer.

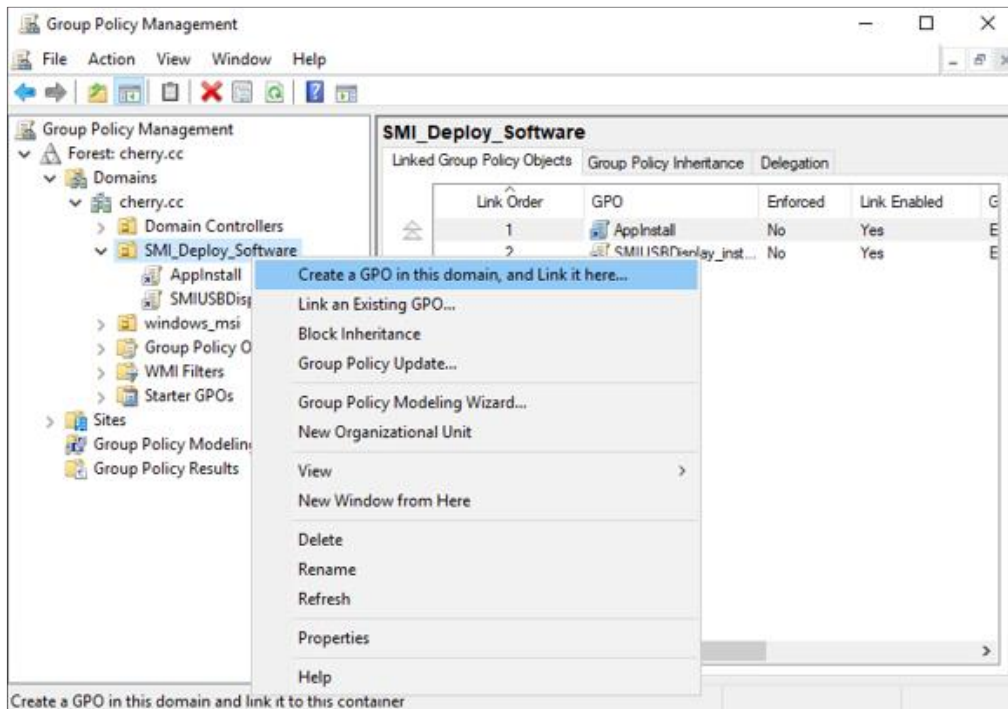
Please open “Group Policy Management”:



In the group policy management, you can create “New Organizational Unit”, named “SMI_Deploy_Software”.



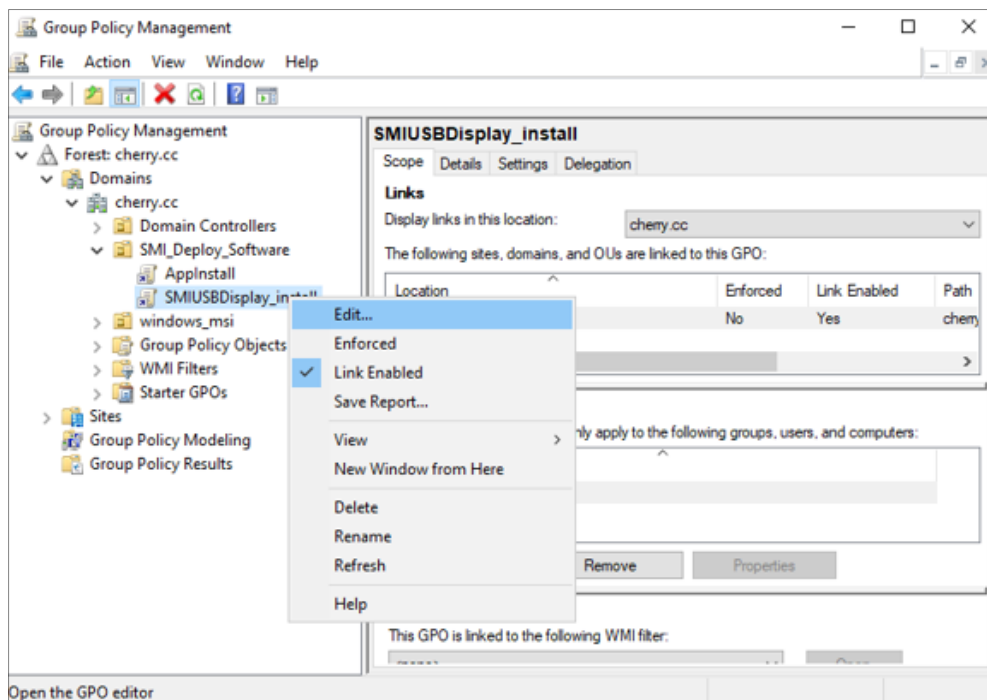
It's recommended to create a new GPO for the software installation in the SMI_Deploy_Software. Do not add these settings to the Default Domain Policy.



In this example, we are going to install “SMIUSBDisplaySW770” on all of the computers, so we will create and link the GPO to the SMI_Deploy_Software.

Give the GPO a name, and we name it “SMIUSBDisplay_install” here.

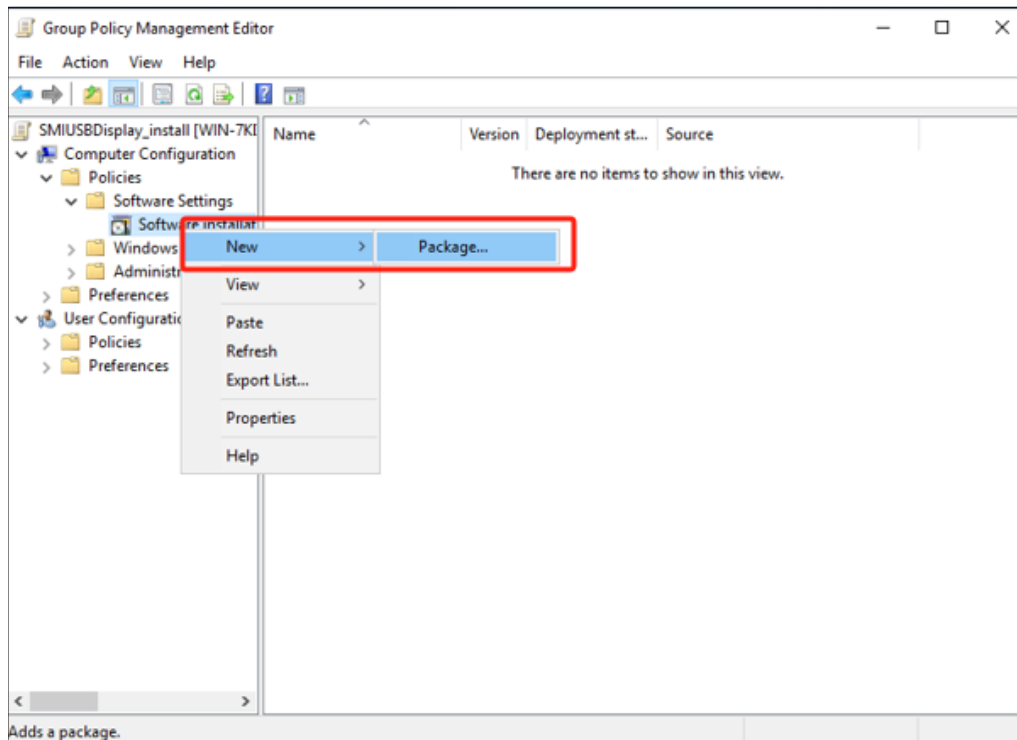
Edit the new GPO:



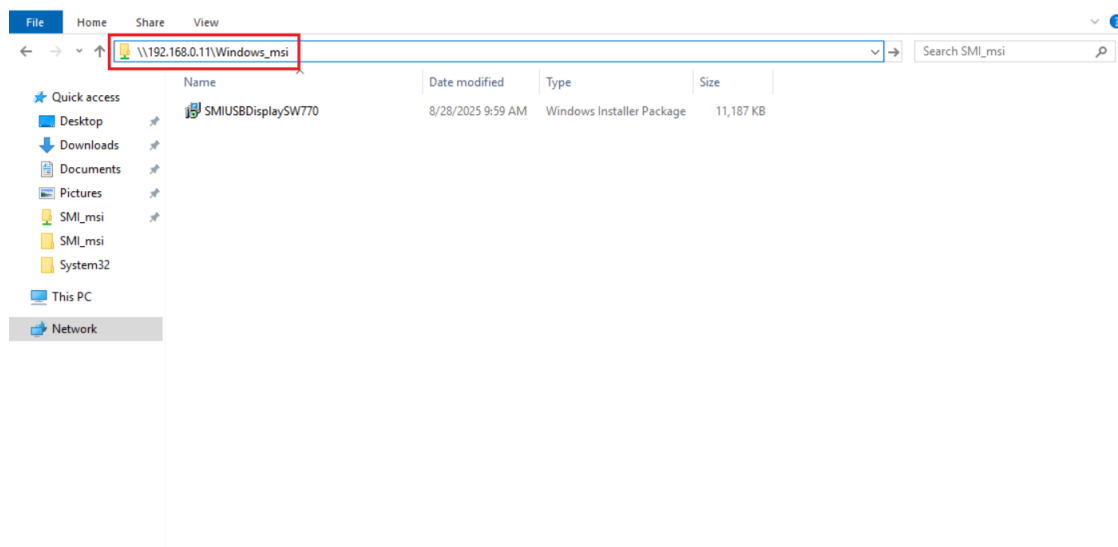
Enter “Group Policy Management Editor”, and then select:

Computer Configuration > Policies > Software Settings > Software installation

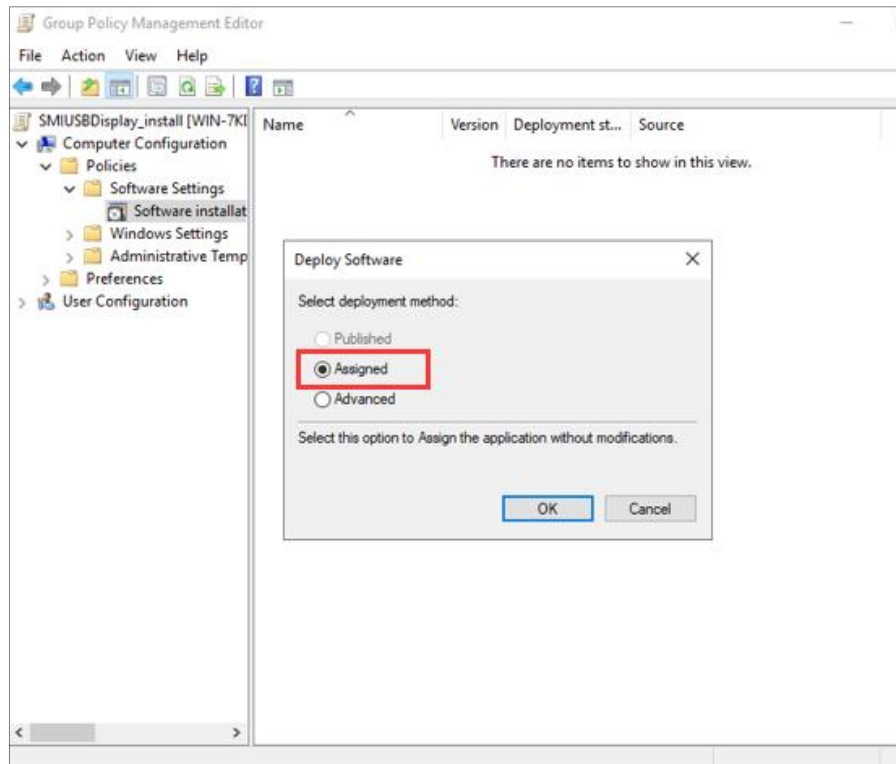
Right click “Software installation” and select New > Package



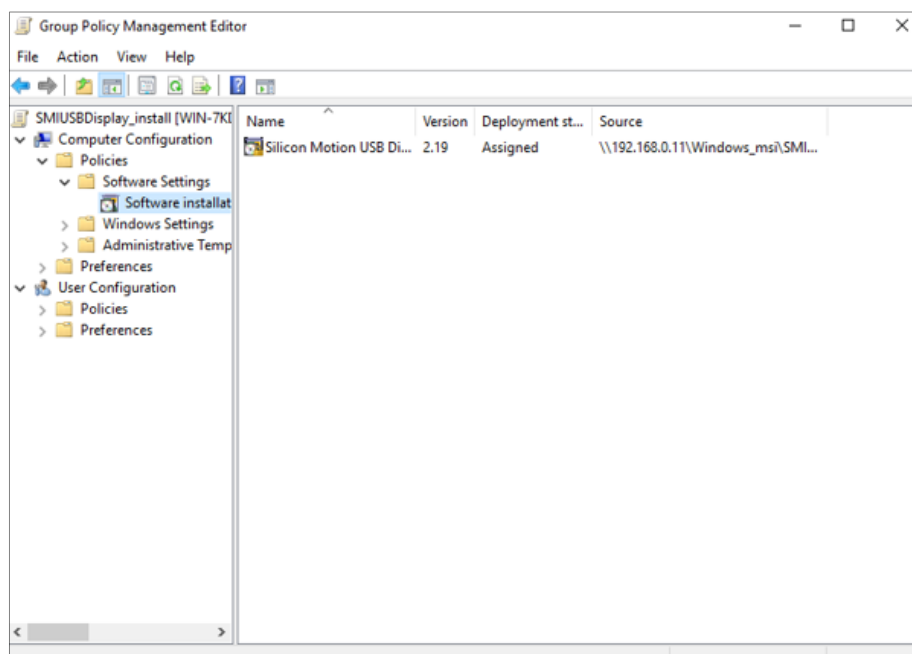
On the screen, browse to the network share with the path you share the msi driver, select the MSI you want to install, and click open. **DO NOT browse with the local drives, or the installation will fail.**



On the software deploying screen, click “Assigned” and then click “OK”. The option “Published” will be grayed out as that option can only be used when deploying the software to users.

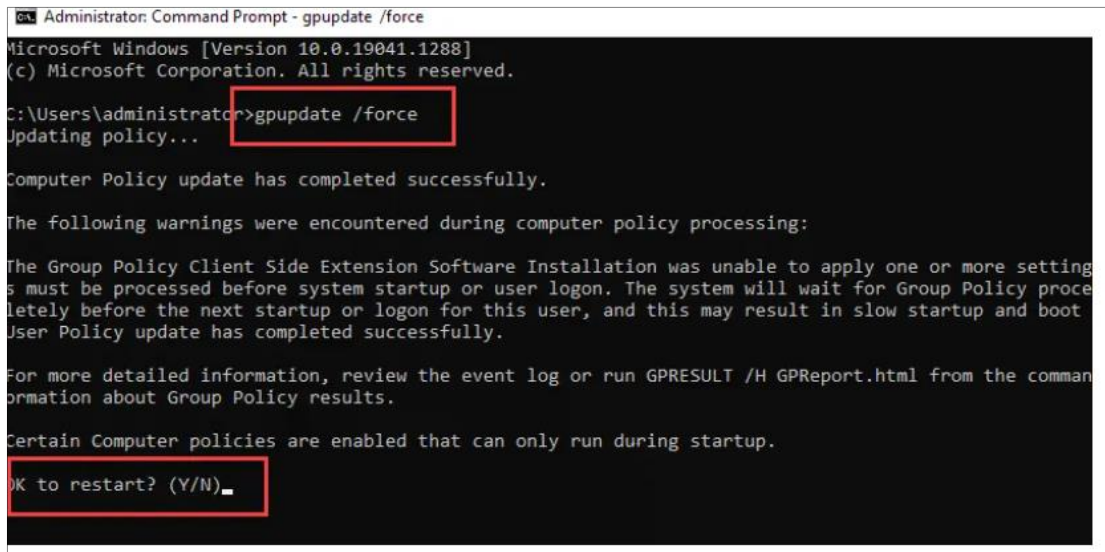


The GPO configuration completes with the steps above. The GPO settings should be looked like this.



The software will only be installed during a reboot and it's required to have the computer with its GPO settings updated. GPO settings will be refreshed automatically every 90 minutes.

To force the GPO settings, you can use the “gpupdate /force” command.



```
Administrator: Command Prompt - gpupdate /force
Microsoft Windows [Version 10.0.19041.1288]
(c) Microsoft Corporation. All rights reserved.

C:\Users\administrator>gpupdate /force
Updating policy...

Computer Policy update has completed successfully.

The following warnings were encountered during computer policy processing:

The Group Policy Client Side Extension Software Installation was unable to apply one or more settings
that must be processed before system startup or user logon. The system will wait for Group Policy processing
to complete before the next startup or logon for this user, and this may result in slow startup and boot time.
User Policy update has completed successfully.

For more detailed information, review the event log or run GPRESULT /H GPREport.html from the command prompt for
more information about Group Policy results.

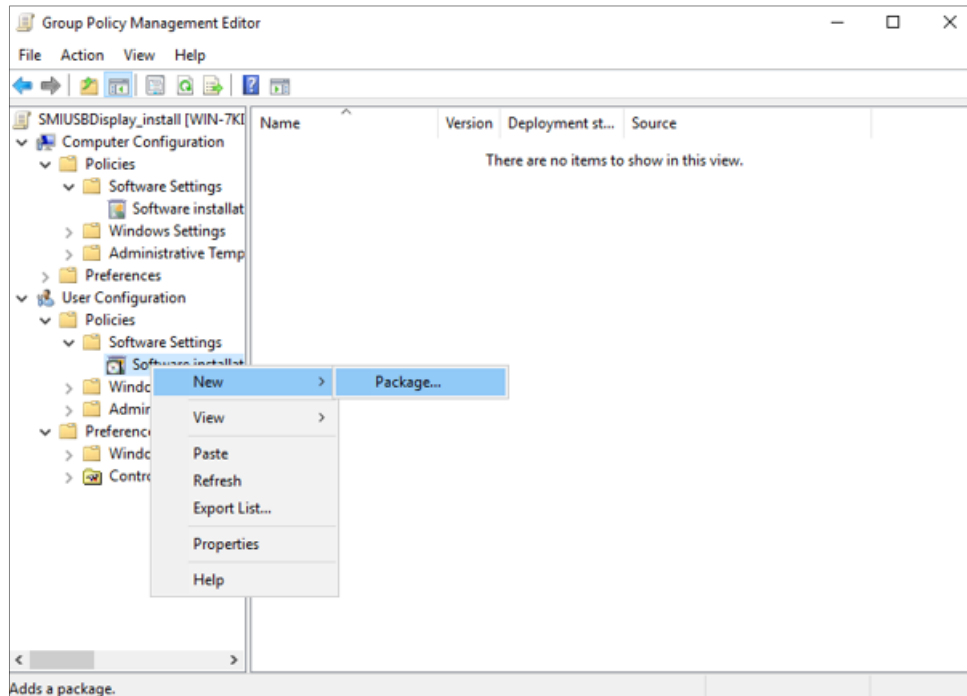
Certain Computer policies are enabled that can only run during startup.

OK to restart? (Y/N)_
```

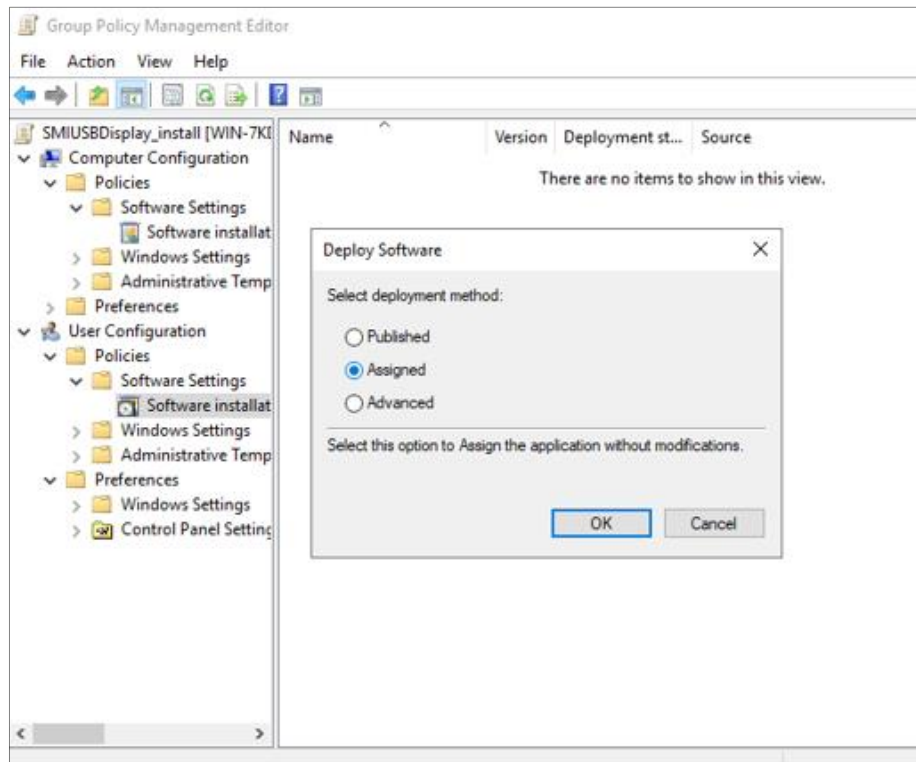
When you run the gpupdate command, you will get a message saying one or more settings must be processed before the system gets started or a user logs in. It shows that the software is installed by GPO and is expected. Type “Y” to restart the computer. The software will be installed on the reboot.

2.3 GPO Settings to Install Software for Users Only

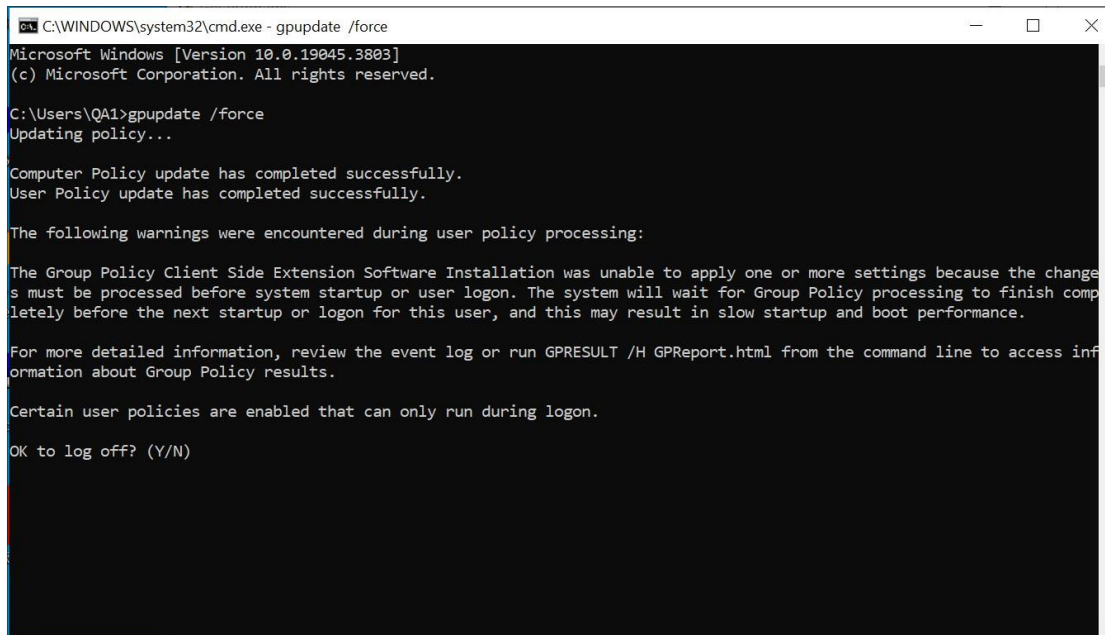
If you want to install software to specific users, just apply the “User configuration” GPO settings instead of the “Computer Configuration”.



On the “Deploy Software” screen, click “Assigned” and then click “OK”.



To force the GPO settings, you can use the “gpupdate /force” command.



```
C:\WINDOWS\system32\cmd.exe - gpupdate /force
Microsoft Windows [Version 10.0.19045.3803]
(c) Microsoft Corporation. All rights reserved.

C:\Users\QA1>gpupdate /force
Updating policy...

Computer Policy update has completed successfully.
User Policy update has completed successfully.

The following warnings were encountered during user policy processing:

The Group Policy Client Side Extension Software Installation was unable to apply one or more settings because the changes must be processed before system startup or user logon. The system will wait for Group Policy processing to finish completely before the next startup or logon for this user, and this may result in slow startup and boot performance.

For more detailed information, review the event log or run GPRESULT /H GPREport.html from the command line to access information about Group Policy results.

Certain user policies are enabled that can only run during logon.

OK to log off? (Y/N)
```

Please input “Y” then the software will get installed.